

HELI Manual Stacker Catalogue



Manual Stacker with Fixed Forks

- SDJ500
- SDJ1000
- SDJ1500



Manual Stacker with Adjustable Forks

- SDJA500
- SDJA1000
- SDJA1500



SDJA-I

- (1000-1500KG)



Manual Stacker with Straddle Legs

- SDJAS500
- SDJAS1000
- SDJAS1500

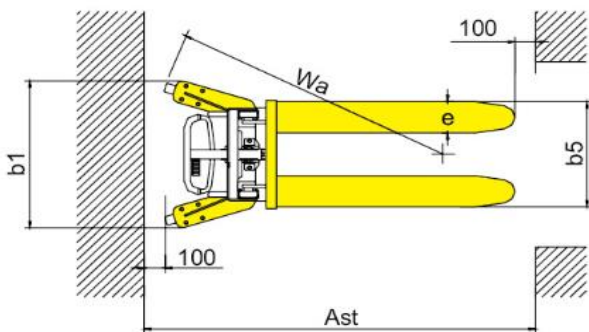
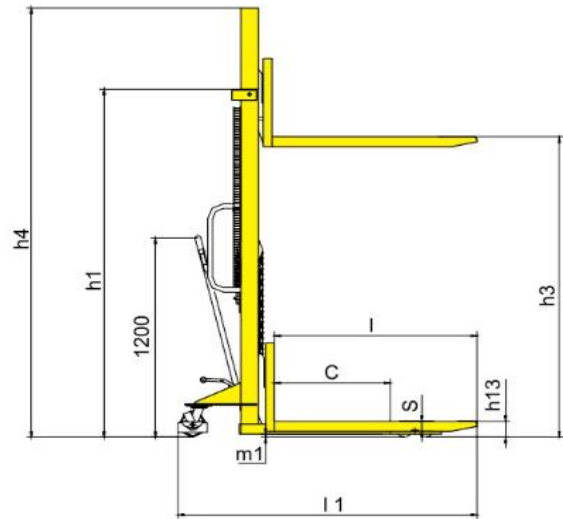
Model:

SDJ500

SDJ1000

SDJ1500





Compact design for European pallet 550/580mm x 1100/1150mm.

High quality steel mast and strong steel construction ensures rigidity and durability.

Welded forks deliver low-cost solution.

High efficient pumps makes the control easier to operate.

Foot and hand controlled lifting function allows the operator to work without having to perform extreme body movements.

Metal grid protects user from lift chains.

With safety wheel guard and brake system to ensure safety during operation.

| Model | | SDJ500 | SDJ1000 | SDJ1500 |
|---|-----------------------------|------------------|---------------------------------|----------------|
| Load capacity/rated load | Q(kg) | 500 | 1000 | 1500 |
| Load centre distance | c(mm) | 600 | 600 | 400 |
| Fork height, lowered | h_{13} (mm) | 90 | 90 | 90 |
| Height, mast lowered | h_1 (mm) | 1490/2080 | 1490/1720/2080/1838/2080 | 2080 |
| Max. lift height | h_2(mm) | 1000/1600 | 1000/1200/1600/2500/3000 | 1600 |
| Height, mast extended | h_2 (mm) | 1490/2080 | 1490/1720/2080/2925/3420 | 2080 |
| Overall length | l_1 (mm) | 1655/1705 | 1655/1705 | 1655/1705 |
| Overall width | b_1 (mm) | 755 | 755/755/755/860/860 | 755 |
| Fork dimensions | s/e/l(mm) | 61/170/1150 | 61/170/1150 | 61/170/1150 |
| Width overall forks | b_2 (mm) | 550 | 550/550/550/580/580 | 550 |
| Ground clearance, laden, below mast | m_1 (mm) | 25 | 25 | 25 |
| Aisle width for pallets 1000x1200 crossways | A_c (mm) | 2112 | 2112 | 2112 |
| Aisle width for pallets 800x1200 lengthways | A_d (mm) | 1945 | 1945 | 1945 |
| Turning radius | W_1 (mm) | 1380 | 1380 | 1380 |
| Lift speed,laden/unladen | mm/time | 25 | 25 | 21 |
| Lowering speed,laden/unladen | mm/s | Manual control | Manual control | Manual control |
| Service weight | kg | 185 / 213 | 190/198/214/292/305 | 239 |

Model:

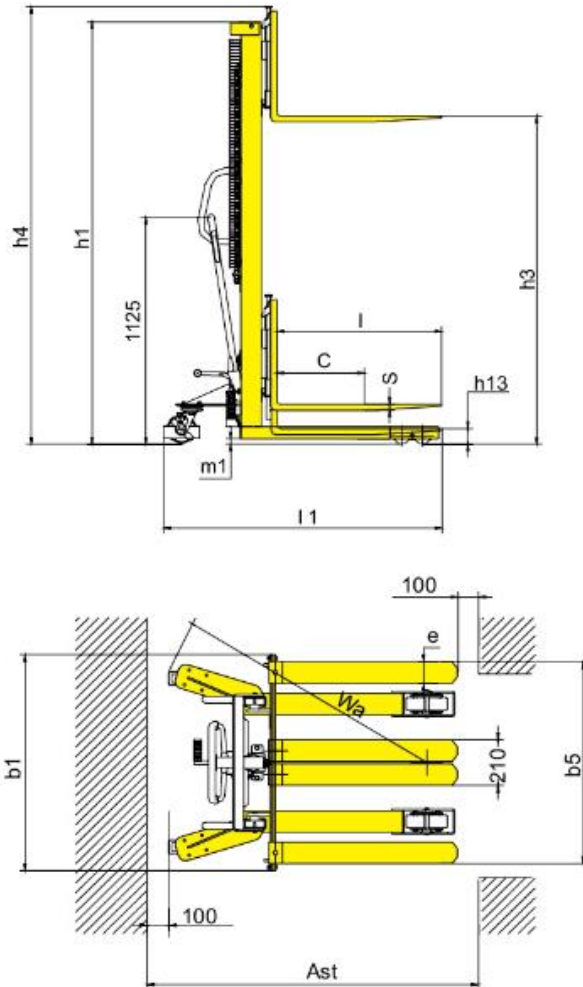
SDJA500

SDJA1000

SDJA1500

Forged Forks





- With adjustable forks between 200-950mm.
- Lifting Height from 1600mm to 2500mm.
- High quality steel mast ensures rigidity and durability.
- Adjustable forged forks.
- High efficient pumps makes the control easier to operate.
- Foot and hand controlled lifting function allows the operator to work without having to perform extreme body movements.
- Metal grid protects user from lift chains.
- With safety wheel guard and brake system to ensure safety during operation.

SDJA series with fixed legs adjustable forged forks

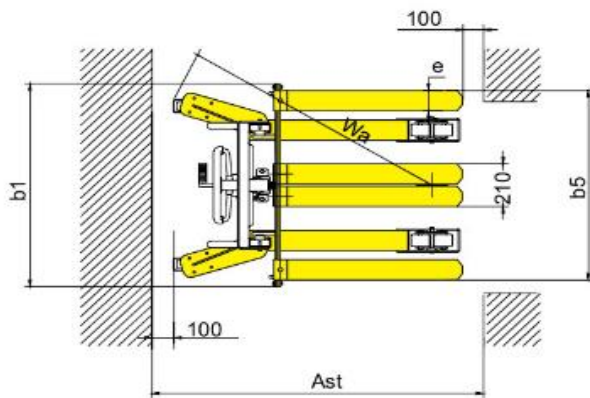
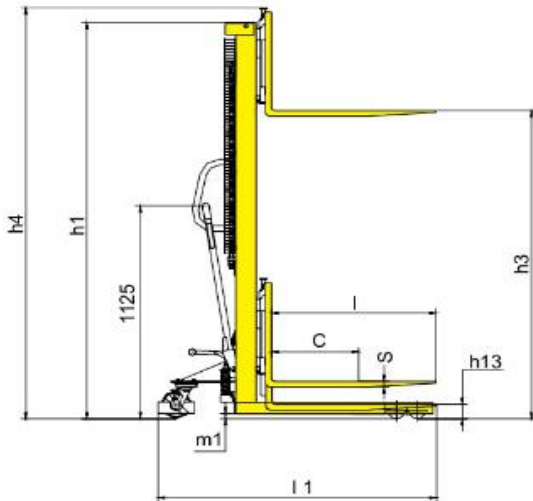
1KG=2.205LB 1INCH=25.40MM

| Model | | SDJA500 | SDJA1000 | SDJA1500 |
|---|-----------------------------|------------------|------------------|------------------|
| Load capacity/rated load | Q(kg) | 500 | 1000 | 1500 |
| Load centre distance | c(mm) | 500 | 500 | 500 |
| Fork height, lowered | h_3 (mm) | 90 | 90 | 90 |
| Height, mast lowered | h_1 (mm) | 2000 | 2085/1840 | 2090 |
| Max. lift height | h_4(mm) | 1600 | 1600/2500 | 1600 |
| Height, mast extended | h_4 (mm) | 2010 | 2165/2925 | 2150 |
| Overall length | l_1 (mm) | 1380/1640 | 1380/1640 | 1380/1640 |
| Overall width | b_1 (mm) | 805 | 1000/750 | 1000 |
| Fork dimensions | s/e/l(mm) | 48/100/800(1060) | 30/100/800(1060) | 30/100/800(1060) |
| Width overall forks | b_5 (mm) | 200-745 | 200-950/700 | 200-950 |
| Ground clearance, laden, below mast | m_1 (mm) | 20 | 25 | 25 |
| Aisle width for pallets 1000x1200 crossways | A_c (mm) | 1915 | 1915 | 1915 |
| Aisle width for pallets 800x1200 lengthways | A_s (mm) | 1910 | - | - |
| Turning radius | W_t (mm) | 1235 | 1235 | 1235 |
| Lift speed, laden/unladen | mm/time | 25 | 25 | 21 |
| Lowering speed, laden/unladen | mm/s | Manual control | Manual control | Manual control |
| Service weight | kg | 161 | 250/316 | 280 |

Model:
SDJA-I
(1000~1500kg)



- With adjustable forks between 295/310mm to 930mm.
- Shaft type forks help to control adjustment better.
- High quality steel mast and strong steel construction ensures rigidity and durability.
- Welded forks deliver low-cost solution.
- High efficient pumps makes the control easier to operate.
- Foot and hand controlled lifting function allows the operator to work without having to perform extreme body movements.
- Metal grid protects user from lift chains.
- With safety wheel guard and brake system to ensure safety during operation.



SDJA series with fixed legs and adjustable forks

1KG=2.205LB 1INCH=25.40MM

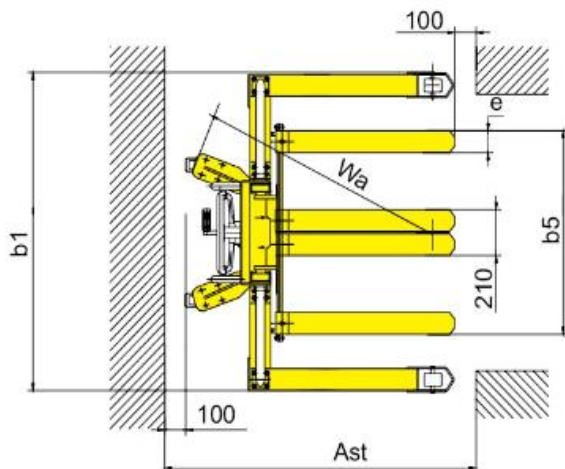
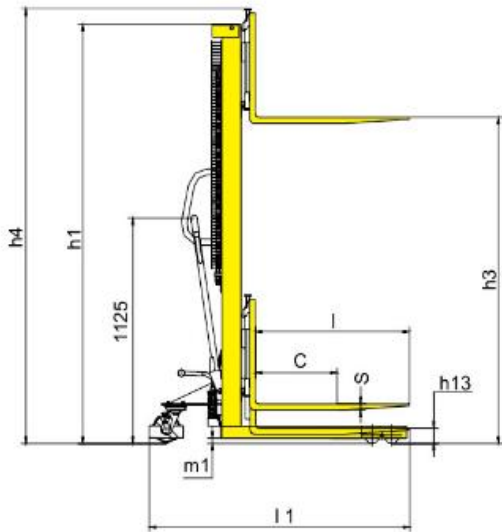
| Model | | SDJA1000- I | SDJA1500- I |
|---|-----------------------------|-------------------|-------------------|
| Load capacity/rated load | Q(kg) | 1000 | 1500 |
| Load centre distance | c(mm) | 500 | 500 |
| Fork height, lowered | h_{13} (mm) | 90 | 90 |
| Height, mast lowered | h_1 (mm) | 2090/1840 | 2090 |
| Max. lift height | h_2(mm) | 1600/2500 | 1600 |
| Height, mast extended | h_4 (mm) | 2090/2925 | 2090 |
| Overall length | l_1 (mm) | 1680 | 1680 |
| Overall width | b_1 (mm) | 955 | 955 |
| Fork dimensions | s/e/l(mm) | 60/142/1070(1150) | 60/154/1070(1150) |
| Width overall forks | b_5 (mm) | 295~930 | 310~930 |
| Ground clearance, laden, below mast | m_1 (mm) | 25 | 25 |
| Aisle width for pallets 1000x1200 crossways | A_x (mm) | 2146 | 2146 |
| Aisle width for pallets 800x1200 lengthways | A_x (mm) | 2141 | 2141 |
| Turning radius | W_p (mm) | 1235 | 1235 |
| Lift speed, laden/unladen | mm/time | 25 | 21 |
| Lowering speed, laden/unladen | mm/s | Manual control | Manual control |
| Service weight | kg | 250/322 | 270 |

Model:

SDJAS500

SDJAS1000





- Straddle legs width reach 1300mm(500kg)and1250mm(1000kgs).
- Lifting Height from 1500-1600mm.
- With adjustable forged forks.
- High quality steel mast ensures rigidity and durability.
- High efficient pumps makes the control easier to operate.
- Foot and hand controlled lifting function allows the operator to work without having to perform extreme body movements.
- Metal grid protects user from lift chains.
- With safety wheel guard and brake system to ensure safety during operation.

SDJAS series with Straddle legs and adjustable forks

1KG=2.205LB 1INCH=25.40MM

| Model | | SDJAS500 | SDJAS1000 |
|---|-----------------------------|------------------|------------------|
| Load capacity/rated load | Q(kg) | 500 | 1000 |
| Load centre distance | c(mm) | 500 | 500 |
| Fork height, lowered | h_2 (mm) | 70 | 70 |
| Height, mast lowered | h_1 (mm) | 2000 | 2050 |
| Max. lift height | h_3(mm) | 1600 | 1600 |
| Height, mast extended | h_4 (mm) | 2100 | 2155 |
| Overall length | l_1 (mm) | 1340/1600 | 1300/1560 |
| Overall width | b_1 (mm) | 1525 | 1475 |
| Fork dimensions | s/e/l(mm) | 48/100/800(1060) | 30/100/800(1060) |
| Width overall forks | b_2 (mm) | 745 | 950 |
| Round clearance, laden,below mast | m_1 (mm) | 25 | 25 |
| Aisle width for pallets 1000x1200 crossways | A_c (mm) | 1975 | 1975 |
| Aisle width for pallets 800x1200 lengthways | A_d (mm) | 1915 | 1915 |
| Turning radius | W_c (mm) | 1200 | 1200 |
| Lift speed,laden/unladen | mm/time | 25 | 25 |
| Lowering speed,laden/unladen | mm/s | Manual control | Manual control |
| Service weight | kg | 223 | 294 |

Model:
SJJA20E
Forged Forks

Model:
SJJA20E-III
Overall forks



Folded Foot Pedal

- Compact design with strong steel construction.
- High quality steel mast ensures rigidity and durability.
- Adjustable forged forks.
- Screw release allows forks to descend.
- Foot operated lift for raising loads.
- With folded type foot pedal.
- Metal grid protects user from lift chains.
- With safety wheel guard and brake system to ensure safety during operation.

SJJA20E series with fixed legs adjustable forks

1KG=2.205LB 1INCH=25.40MM

| Model | | SJJA20E | SJJA20E-III |
|---|------------------------------------|----------------|----------------|
| Load capacity/rated load | Q(kg) | 2000 | 2000 |
| Load centre distance | $c(\text{mm})$ | 400 | 400 |
| Fork height, lowered | $h_{13}(\text{mm})$ | 90 | 90 |
| Height, mast lowered | $h_1(\text{mm})$ | 2085 | 2085 |
| Max. lift height | $h_3(\text{mm})$ | 1500 | 1500 |
| Height, mast extended | $h_4(\text{mm})$ | 2085 | 2085 |
| Overall length | $l_1(\text{mm})$ | 1410 | 1516 |
| Overall width | $b_1(\text{mm})$ | 1000 | 830 |
| Fork dimensions | $s/e/l(\text{mm})$ | 30/120/900 | 60/166/900 |
| Width overall forks | $b_2(\text{mm})$ | 250~950 | 350-710 |
| Round clearance, laden,below mast | $m_1(\text{mm})$ | 25 | 20 |
| Aisle width for pallets 1000x1200 crossways | $A_{st}(\text{mm})$ | 2050 | 2166 |
| Aisle width for pallets 800x1200 lengthways | $A_{st}(\text{mm})$ | 2040 | - |
| Turning radius | $W_2(\text{mm})$ | 1250 | 1250 |
| Lift speed,laden/unladen | mm/time | 18/20 | 18/20 |
| Lowering speed,laden/unladen | mm/s | Manual control | Manual control |
| Service weight | kg | 292 | 260 |

